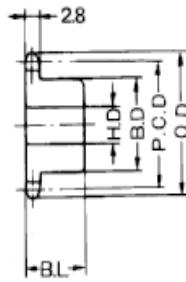


# No.410 スプロケット

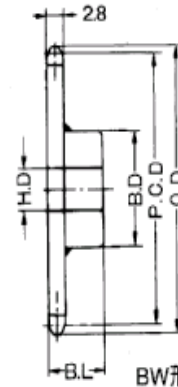
P=12.70m/m(1/2")



A形



B形



BW形

(単位 : mm)

| 歯数 | ピッチ径<br>P.C.D. | 外径<br>O.D. | A形          |                | B・BW形 |    |      |       | 概略<br>重量<br>kg |
|----|----------------|------------|-------------|----------------|-------|----|------|-------|----------------|
|    |                |            | 軸穴径<br>H.D. | 概略<br>重量<br>kg | 軸穴径HD |    | ボス   |       |                |
|    |                |            |             |                | 最小    | 最大 | 径B.D | 長さB.L |                |
| 8  | 33.20          | 38         | 9           | 0.015          |       |    |      |       |                |
| 9  | 37.13          | 42         | 9           | 0.020          |       |    |      |       |                |
| 10 | 41.10          | 46         | 9           | 0.029          | 9     | 15 | 28   | 25    | 0.14           |
| 11 | 45.08          | 50         | 10          | 0.030          | 10    | 18 | 30   | 25    | 0.16           |
| 12 | 49.07          | 55         | 10          | 0.040          | 10    | 22 | 34   | 25    | 0.20           |
| 13 | 53.07          | 59         | 10          | 0.045          | 13    | 24 | 38   | 25    | 0.23           |
| 14 | 57.07          | 63         | 10          | 0.055          | 13    | 26 | 42   | 25    | 0.28           |
| 15 | 61.08          | 67         | 10          | 0.063          | 13    | 28 | 46   | 25    | 0.34           |
| 16 | 65.10          | 71         | 12          | 0.070          | 13    | 30 | 50   | 25    | 0.43           |
| 17 | 69.12          | 75         | 12          | 0.082          | 13    | 32 | 54   | 30    | 0.56           |
| 18 | 73.14          | 79         | 12          | 0.090          | 13    | 32 | 54   | 30    | 0.68           |
| 19 | 77.16          | 83         | 12          | 0.095          | 13    | 32 | 54   | 30    | 0.75           |
| 20 | 81.18          | 87         | 12          | 0.115          | 14    | 32 | 56   | 40    | 0.76           |
| 21 | 85.21          | 91         | 12          | 0.125          | 14    | 32 | 56   | 40    | 0.78           |
| 22 | 89.24          | 95         | 12          | 0.135          | 14    | 32 | 56   | 40    | 0.79           |
| 23 | 93.27          | 99         | 12          | 0.147          | 14    | 32 | 56   | 40    | 0.80           |
| 24 | 97.30          | 103        | 12          | 0.165          | 14    | 32 | 56   | 40    | 0.82           |
| 25 | 101.33         | 108        | 12          | 0.180          | 14    | 32 | 56   | 40    | 0.88           |
| 26 | 105.36         | 112        | 12          | 0.196          | 14    | 32 | 56   | 40    | 0.95           |
| 27 | 109.40         | 116        | 12          | 0.220          | 14    | 40 | 65   | 40    | 1.00           |
| 28 | 113.43         | 120        | 12          | 0.225          | 14    | 40 | 65   | 40    | 1.20           |
| 29 | 117.46         | 124        | 12          | 0.245          | 14    | 40 | 65   | 40    | 1.25           |
| 30 | 121.50         | 128        | 14          | 0.260          | 14    | 40 | 65   | 40    | 1.30           |
| 31 | 125.53         | 133        | 14          | 0.285          | 14    | 40 | 65   | 40    | 1.35           |
| 32 | 129.57         | 136        | 14          | 0.295          | 14    | 40 | 65   | 40    | 1.40           |
| 33 | 133.61         | 140        | 14          | 0.305          | 14    | 40 | 65   | 40    | 1.50           |
| 34 | 137.64         | 144        | 14          | 0.337          | 14    | 40 | 65   | 40    | 1.55           |
| 35 | 141.68         | 148        | 14          | 0.365          | 14    | 40 | 65   | 40    | 1.58           |
| 36 | 145.72         | 153        | 15          | 0.372          | 17    | 40 | 68   | 40    | 1.62           |
| 37 | 149.75         | 157        | 15          | 0.410          | 17    | 40 | 68   | 45    | 1.70           |
| 38 | 153.79         | 161        | 15          | 0.430          | 17    | 40 | 68   | 45    | 1.82           |
| 39 | 157.83         | 165        | 15          | 0.480          | 17    | 40 | 68   | 45    | 1.90           |
| 40 | 161.87         | 169        | 15          | 0.480          | 17    | 40 | 68   | 45    | 2.00           |
| 41 | 165.91         | 173        | 15          | 0.500          | 17    | 40 | 68   | 45    |                |
| 42 | 169.95         | 177        | 15          | 0.520          | 17    | 40 | 68   | 45    |                |
| 43 | 173.98         | 181        | 15          | 0.560          | 17    | 40 | 68   | 45    |                |
| 44 | 178.02         | 185        | 15          | 0.650          | 17    | 40 | 68   | 45    |                |
| 45 | 182.06         | 189        | 15          | 0.650          | 17    | 40 | 68   | 45    | 2.20           |
| 46 | 186.10         | 193        | 15          | 0.650          | 17    | 40 | 68   | 45    |                |
| 47 | 190.14         | 197        | 15          | 0.680          | 17    | 40 | 68   | 45    |                |
| 48 | 194.18         | 201        | 15          | 0.700          | 17    | 40 | 68   | 45    | 2.40           |
| 49 | 198.22         | 205        | 15          | 0.750          | 17    | 40 | 68   | 45    |                |
| 50 | 202.26         | 209        | 15          | 0.800          | 17    | 40 | 68   | 45    | 2.50           |
| 54 | 218.42         | 226        | 15          | 0.850          | 17    | 40 | 68   | 45    | 2.75           |
| 60 | 242.66         | 250        | 16          | 0.900          | 17    | 40 | 68   | 45    | 3.10           |

\* 全品焼入れなし

\* B形の材質は炭素鋼

\* B形で歯数36~60のものは溶接タイプ・材質は普通鋼